



# C5032 Quick Reference Guide for Studio Input

## Basic Hardware Function (Without Studio Input Software)

### Basic Feature

This product should be considered as a computer peripheral to replace keyboard, mouse, PC remote control and Presenter. It is different from the universal remote for home appliances.



This product has three parts: remote control, USB IR receiver to computer, and Studio Input software. You may just plug the USB IR receiver to your computer to start to use this product.

**Green Key(Power):** Shutdown Computer.

**Red Key(Laser):** Pointer.

**Blue Key(PC):** PC Mode or text input mode or language change. **Yellow Key(Media):** Media Mode to control application software.

Other than the graphical key definitions, blue text means PC mode functions, Yellow (red) text means media mode function. White(black) means for both modes.

### Wireless Presenter

After using mouse to click on the Powerpoint file to be presented, you will see a screen shot like the following:



**PC** Press PC Key, to be in PC mode.

**Show** Press Show, to start presentation.

Use UP/DOWN, LEFT/RIGHT, PgUP/PgDOWN to control the slide show sequence

Click the mouse right key, you may choose to directly jump to any slide that you wish.

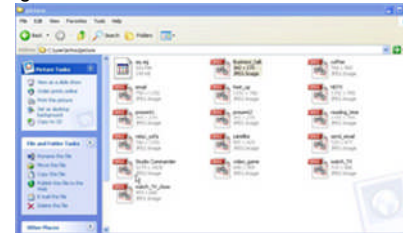
Press ESC Key, to stop presentation

### Laser Pointer

A red laser beam pointer will be emitted, if you press the red Laser key. It is used to as a pointer on many occasions. The signal strength has been designed to match the requirement for many different countries. It is safe to use our products.

### Digital Photo Frame

As long as there are some .jpg, .gif, .tiff, .bmp files under a particular directory, the microsoft® Window picture and Fax Viewer) can be used with Studio Commander to perform digital photo frame function. For example, if I have some picture files in a certain directory like the following:



Use Window picture and Fax Viewer to open a picture file (by Open with).

**PC** Press PC Key to make sure in PC mode

**Full** Press Full to start digital photo frame function

When cursor is move to up right or lower middle, a control panel will be shown

Press ESC to stop digital photo frame function

### Web Browsing

When Internet Explorer, Netscape, Firebox or any browser are used, you may find a web page to be more than one page long or more than one page wide. In these case, you may need the scrolling functions.

**PC** Press PC key to be in PC mode.

Use UP/DOWN or Left/Right to scroll the web page up/down or left/right.

Use PgUP/PgDOWN to scroll the web page by a page up/down.

Use Home/End to jump to the file beginning or file end.

### AV Media Control

Press the Yellow (Media Mode) Key, to switch to the media control mode.

**Media** Press the yellow key, to make sure it is in Media mode

Press Yellow (Media Mode) Key, to switch media mode. Without software support, the functions for media mode is designed for Microsoft Media Player. To support the Media player function, the key definition are defined as follows:

- Help
- Zoom In
- Zoom Out
- Play/Pause
- Pause (New)
- Stop
- Rec (Open)
- Prev.
- Next
- Rewind
- Forward
- Vol-
- Vol+
- Ch-
- Ch+

**Mute** Mute

All numbers are used to change channels. If you need to switch the key map for different application, you will need the Studio Input software.

### Wireless Mouse

Trace ball and L, R Keys forms a 2-key mouse. L means the left mouse key. R means for the right mouse key. Pressing the trace ball is the same as left key.

**PC** If you need scrolling function, after clicking the blue (PC Key), you may use UP/DOWN keys to scroll the screen.

If you need the drag and drop function, you need to use one hand to press L key and use the other hand to control the trace ball.

### Other Keys

**PC Break** The Break key under PC mode is the same as Ctrl+Alt+Del on normal keyboard. It is used to break the execution of a program to avoid deadlocks.

**PC Menu** The Menu key is the same as Alt+ on keyboard. It is used to control the menu of a program. You may use the up/down and left/right keys for function selection.

**Bkspc** Same as backspace on keyboard.

**INS** Same as insert on keyboard.

**DEL** Same as delete on keyboard.

**Space** Same as space on keyboard.



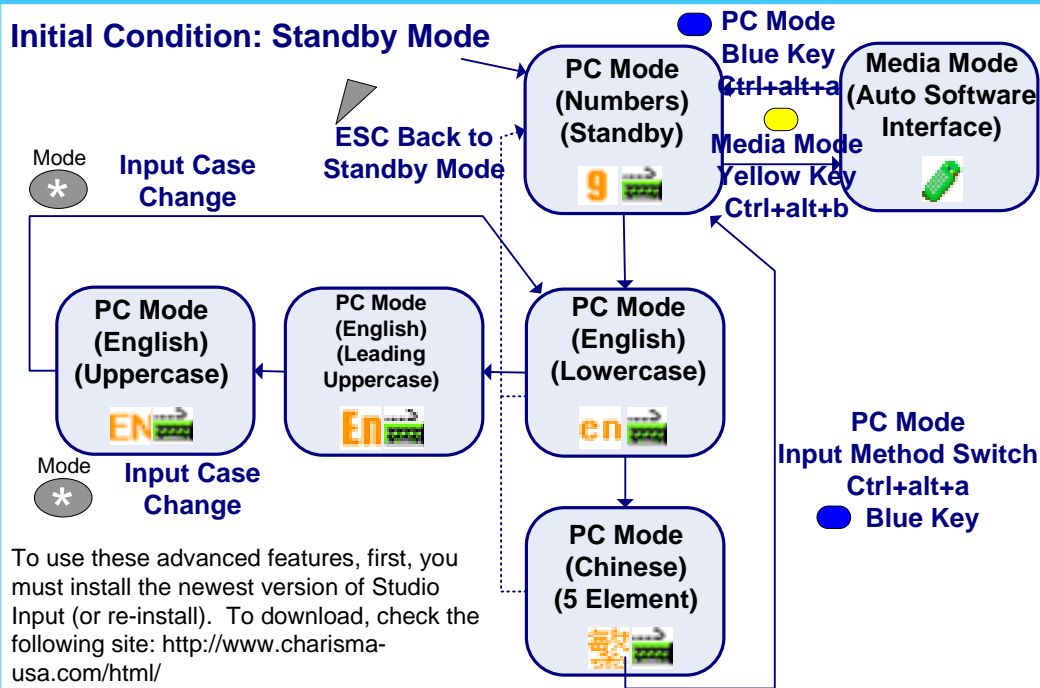


# C5032 Quick Reference Guide for Studio Input

## Advanced Features (With Studio Input Software)

### Studio Input Modes

Initial Condition: Standby Mode



To use these advanced features, first, you must install the newest version of Studio Input (or re-install). To download, check the following site: [http://www.charisma-usa.com/html/main\\_download.htm](http://www.charisma-usa.com/html/main_download.htm)

### Auto Media Control

Studio Input allows you to control different software using the same input interface device. Just press the Yellow (Media) key, a remote control symbol will be shown at the lower right corner.



This means you are in the Media mode, the software will switch the user interface to match your active window. **When you finish Media mode functions, you may need to change back to the standby mode in PC mode.**

### Chinese 5 Element Phrase Input

Same as 5 element input method, each Chinese character uses 2 consonant-rhyme keys. A phrase can be entered at a time. For example, “中山北路” can be found by input code of 60-88-16-42.

After that, you may use Home-End to select the right phrase and use, Mute (Pick) to pick the phrase. Mouse clicks are also valid.

### Chinese 5 Element Input

In 5 Element input method, each Chinese character will have 3 code for its syllable. That is Consonant-Rhyme-Tone (CRT) combination. For example, “變” (change) may have its Zhuyin as ㄅㄩㄢˋ (Bian4), its consonant is ㄅ (B) for 1, rhyme is ㄢ (an) for 8, 4th tone ˋ for 4. The CRT code is 184. The middle “—” just does not count.

All Chinese character can use the CRT code to pick a word. If there is no consonant, you may use 0. For example, “阿” (Y, a) has a CRT code of 041. If there is no rhyme, you may use 1. For example, “智” (ㄓㄧˋ, Zhi4), has a CRT code of 614.

In short, the 5 element input method is almost the same as the Zhuyin (Pinyin) method except that the middle sounds are not counted. And, all Chinese syllable are coded in two digits. Just remember **“Ignore the middle sounds. if no consonant, use 0. If no rhyme, use 1.”**

The keyboard layout is exactly the same as the Zhuyin (Pinyin) keyboard. To fully master 5 element input method, please refer the following web-site: [http://www.charisma-usa.com/html/main\\_tutorial\\_tc.htm](http://www.charisma-usa.com/html/main_tutorial_tc.htm)

### English (Euro) Input

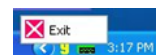
In English Input, each letter will take only one key. The candidate list keeps on reducing whenever a new key is entered. You may use UP/DOWN key to select for the right candidate and use Return key to pick the word. For example, “good” has a input code of 4663 where g=4, o=6, o=6, d=3. All symbols start with 1, all punctuation mark start with 0. Space has its own space (#) key. If you do not need to enter a whole word, you may enter 21 for “a” , 22 for “b” , 23 for “c” .

### Chinese Zhuyin Input

Each Phonetic Symbol takes one key. For example, “ㄅㄩㄢˋ” ㄅ=1, ㄢ=8, 1st Tone=1, By entering 1181, all “ㄅㄩㄢˋ” words will be found. 1st, 2nd , 3rd, 4th, soft tone, are 1, 2, 3, 4, 0, respectively. Use UP/DOWN key and Return key to pick the right candidate. You may also use Left/Right and Insert key to pick the right sound. When error found, you may always back up by using Backspace key. All functions may also be initiated by mouse clicks.

### System Settings

When you need to remove an input method, you may need to quit Studio Input first. To exit Studio Input: check the standby software list for the keyboard or remote icon. Use right mouse click, the exit icon will be shown.



**Use mouse left click to click on Exit, then you will leave Studio Input.** Click on Window Start->All Programs->Studio Input->Keymap Editor & System Setting  
The software for system setting will show up.

Please be aware of the following signals:



Means 5 element input for traditional Chinese



Means 5 element input for the simplified Chinese

